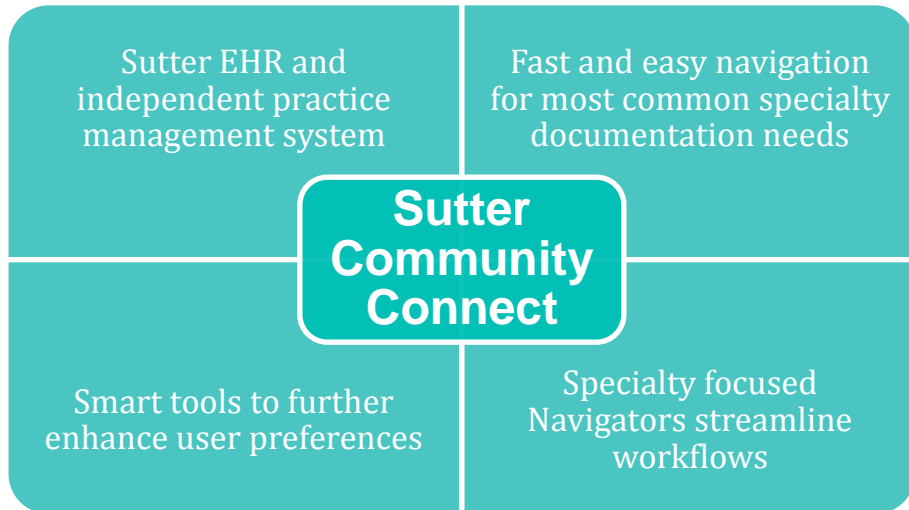


- Geriatrics
- Cardiology
- Family Practice & Internal Medicine
- Ear, Nose and Throat (ENT)
- Urology
- Endocrinology
- Audiology
- Podiatry
- Radiation Oncology
- General Surgery
- Neurology
- Ophthalmology
- Orthopedics & Sports Medicine
- Gastroenterology
- Dermatology
- Pulmonary
- Rheumatology
- Urgent Care
- Nephrology

## Ambulatory Specialty Optimization

*Specialty-focused Navigators to streamline workflows*



Now more than ever, a **strong partnership** with your **EHR vendor** can *simplify the process* and provide the *necessary resources and support to be successful*.

Contact **Larraine Ewing** at **(510) 590-1241** or via email at **EwingL@sutterhealth.org** for more information.